

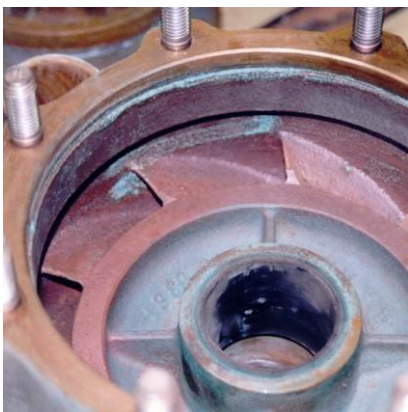
# Centrifugal Pump Repair Day

**This one-day course provides guidance about the repair & maintenance of centrifugal pumps.**

In the morning session of this training day the basic concepts of pump performance are introduced using a small pump rig. The effects of poor operation and maintenance are demonstrated and their impact on pump performance discussed. An overview of the main mechanical components is given and their main degradation mechanism will be identified and explained. A wide range of pump components will be available for delegates to handle and fit.

In the afternoon session the delegates will move to the workshop area, where they will have a “hands-on” opportunity to learn about inspection and dismantling procedures. Work under expert guidance will take place on real pumps. Good assembly practice will be demonstrated and the key areas to check will be highlighted. The session finishes with a demonstration on how to correctly align a pump to its motor and ensure it is correctly fastened to its baseplate/foundation.

*(Please note - delegates will need to bring their own safety footwear and overalls)*



OBJECTIVES AND BENEFITS	COURSE PROGRAMME	WHO SHOULD ATTEND
<p><b>The course will allow delegates to:</b></p> <ul style="list-style-type: none"> <li>• Appreciate why good maintenance is important</li> <li>• Recognise and understand failure modes</li> <li>• Understand the how various components work.</li> <li>• Develop measurement and fitting skills</li> <li>• Follow a repair checklist procedure</li> <li>• Learn about correct measurement and data recording data.</li> </ul>	<p><b>Elements include:</b></p> <ul style="list-style-type: none"> <li>• Pump performance basics</li> <li>• Identification of pump components</li> <li>• An introduction to rolling element bearings and mechanical seals</li> <li>• Identification of failure modes</li> <li>• Dismantling and inspection procedures</li> <li>• Assembly good practice</li> <li>• Pump alignment</li> </ul>	<p>This course is about 40% theory and 60% practical work. It is aimed at apprentices and young engineers who are interested in learning about pumps and pump repair. It is also applicable to those who wish to refresh their knowledge. This includes pump users, maintenance staff, supervisors and plant technicians and engineers.</p>

**For more Info Contact: Jim Eaves on 07968 707 753**

Event Supported by:



ESR Technology Ltd Whittle House, 410 The Quadrant, Birchwood Park, Warrington WA3 6FW United Kingdom

Tel: +44 (0)1925 843 400 Fax: +44 (0)1925 843 500  
 Email: info@esrtechnology.com Web: www.esrtechnology.com

